

Health Educator Job Analysis Project *Timeline Report*

Dr. Eva Doyle
Task Force Chair
Eva_Doyle@taylor.edu

Dr. Beverly Mahoney
Steering Committee Member
bmahoney@liberty.edu

AAHPERD National Conference
Tampa, Florida, April 2009

History

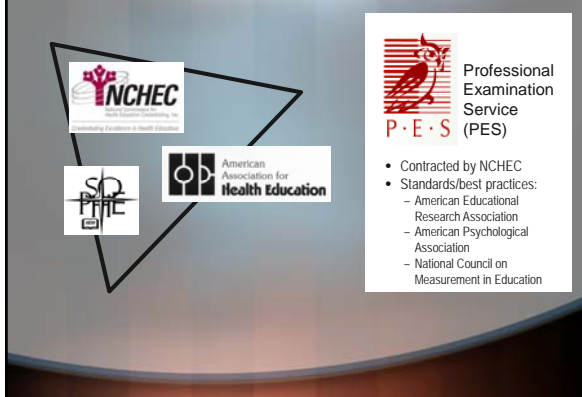


Health Educator Job Analysis

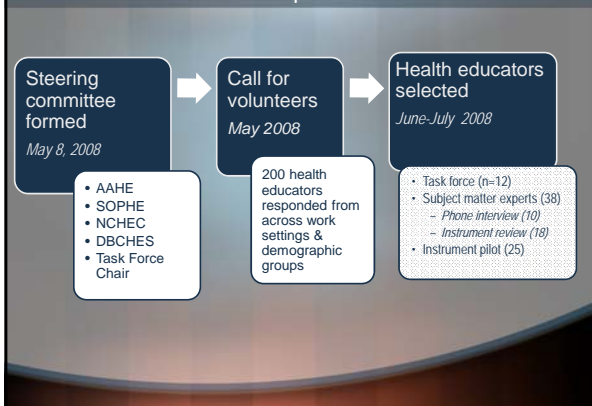
PURPOSE

To validate the contemporary practice of entry-level and advanced-level health educators

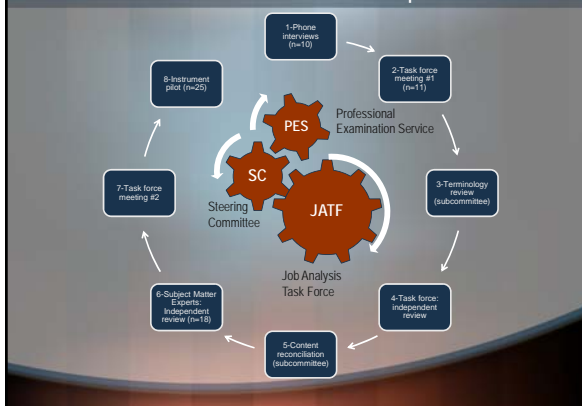
Project Partners

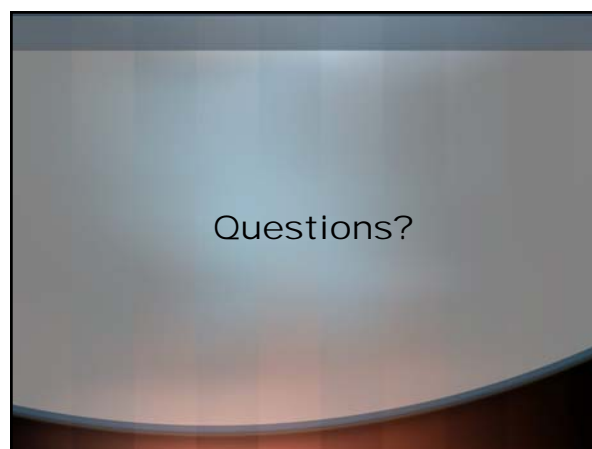


Phase 1: Work Group Selection



Phase 2: Instrument Development





CALLING ALL PRACTICING HEALTH EDUCATORS
National Health Educator Job Analysis Survey - Please Volunteer

The National Commission for Health Education, in cooperation with the American Association for Health Education and the Society for Public Health Education, is sponsoring a national survey to verify the workplace competencies of health educators.

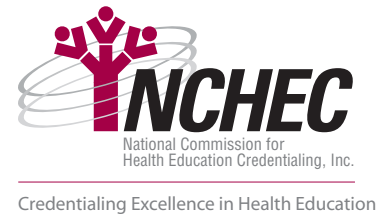
If you are a health education practitioner or faculty member, we need you! The survey will help us update the competencies that form the foundation for health education credentialing, professional preparation, and professional development. According to certification best practices, the competencies must be re-verified every five years.

A critical component of this project is to identify a diverse sample of health educators to take the survey. A random sample of health educators who register by **April 15, 2009** will be selected to complete the online survey. Survey participants will be eligible for a drawing for one of ten gift certificates to a well-known bookstore chain.

If you are willing to participate, please take a few minutes now to register for the survey at

https://www.surveymonkey.com/s.aspx?sm=xLuA2kEFccGz8_2b5iGhJqrw_3d_3d

More information on the Health Educator Job Analysis Project is available on the "NCHEC news section" of the Web site, www.nchecc.org



CALLING ALL PRACTICING HEALTH EDUCATORS
National Health Educator Job Analysis Survey - Please Volunteer

The National Commission for Health Education, in cooperation with the American Association for Health Education and the Society for Public Health Education, is sponsoring a national survey to verify the workplace competencies of health educators.

If you are a health education practitioner or faculty member, we need you! The survey will help us update the competencies that form the foundation for health education credentialing, professional preparation, and professional development. According to certification best practices, the competencies must be re-verified every five years.

A critical component of this project is to identify a diverse sample of health educators to take the survey. A random sample of health educators who register by **April 15, 2009** will be selected to complete the online survey. Survey participants will be eligible for a drawing for one of ten gift certificates to a well-known bookstore chain.

If you are willing to participate, please take a few minutes now to register for the survey at

https://www.surveymonkey.com/s.aspx?sm=xLuA2kEFccGz8_2b5iGhJqrw_3d_3d

More information on the Health Educator Job Analysis Project is available on the "NCHEC news section" of the Web site, www.nchecc.org

